



BIG FLAT NEWS



June 2024

www.bigflatelectric.com

2024 Tribal College and Career Fair

Big Flat Electric Cooperative took part in the Montana Tribal College & Career Fair Circuit held at the Red Whip Center, Fort Belknap Agency in April.

Line Superintendent, Darren Demarais and Member Service/Billing Clerk Debbie Kindle were on hand to provide information and answer questions about careers available at Big Flat Electric and the electric utility industry.

Big Flat Electric appreciates the opportunity to connect with the bright minds of tomorrow and share insights about opportunities in our industry.

RM



Line Superintendent, Darren Demarais and Member Service/Billing Clerk, Debbie Kindle represented Big Flat Electric during the Career Fair.

History 101: Some fun facts about the 1500s

The next time you are washing your hands and complain because the water temperature isn't just how you like it, think about how things used to be. Here are some fun facts from the 1500s.

Most people got married in June because they took their yearly bath in May, and they still smelled pretty good by June. Since they were starting to smell, brides carried a bouquet of flowers to hide the body odor. Hence the custom today of carrying a bouquet when getting married.

Baths consisted of a big tub filled with hot water. The man of the house had the privilege of the nice clean

water first, then all the other sons and men, then the women, and finally the children – last of all the babies. By then the water was so dirty you could actually lose someone in it. Hence the saying, "Don't throw the baby out in the bath water!"

Houses had thatched roofs, thick straw piled high with no wood underneath. It was the only place for animals to get warm, so all the cats and other animals would slip and fall off the roof, resulting in, "it's raining cats and dogs."

The floor was dirt. Only the wealthy had something other than dirt, leading folks to the phrase, "dirt poor."

In those days, they cooked in the

kitchen with a big kettle that always hung over the fire. Every day they lit the fire and added things to the pot. They would eat the stew for dinner, leaving leftovers in the pot to get cold overnight, and then start over the next day. Sometime stew had food in it that had been there for quite a while, thus the rhyme, "Peas porridge hot, peas porridge cold, peas porridge in the pot nine days old."

Bread was divided according to status. Workers got the burnt bottom of the loaf, the family got the middle, and the guests got the top, or the "upper crust."

- Copied from the Internet

SCHOLARSHIPS AWARDED



STORY BY **SHAWNA MYERS** | BIG FLAT ELECTRIC COOPERATIVE

Big Flat Electric Cooperative would like to announce our 2024 Scholarship winners.

Big Flat Electric Trade School Scholarship recipients Trent Billmeyer, Turner High School graduate, received \$250; Addison Ulrich, Malta High School graduate, received \$250; and Kirsta Meisdalen, attending MSU-Northern, received \$500.

Recipients of Big Flat Electric's \$500 Scholarships are

Robert Bell, Harlem High School graduate; Addison Ulrich, Malta High School graduate; Paige Wasson, Whitewater High School graduate; Trent Billmeyer, Turner High School graduate; and Kendall Scheffelmear, Whitewater High School graduate.

Big Flat Electric congratulates all service-area graduates and wishes them well. RM



ADDISON ULRICH,
MALTA HIGH SCHOOL GRADUATE



KENDALL SCHEFFELMEAR,
WHITEWATER HIGH SCHOOL GRADUATE



KIRSTA MEISDALEN,
ATTENDING MSU-NORTHERN



PAIGE WASSON,
WHITEWATER HIGH SCHOOL GRADUATE



ROBERT BELL,
HARLEM HIGH SCHOOL GRADUATE



TRENT BILLMEYER,
TURNER HIGH SCHOOL GRADUATE

Call now to enroll in the budget-billing program

ARE you interested in enrolling in budget billing? Budget billing does not reduce your overall power bill; it spreads the cost out over a 12-month period.

To qualify for the budget billing program, your account must have been active at that location for the past 12 months and have a zero-balance due.

Once your account is set up as a budget billing account, to remain enrolled in the budget billing program, each month you must pay the budget amount due, in full, by the due date.

We will automatically remove accounts with two months unpaid balance from the budget billing

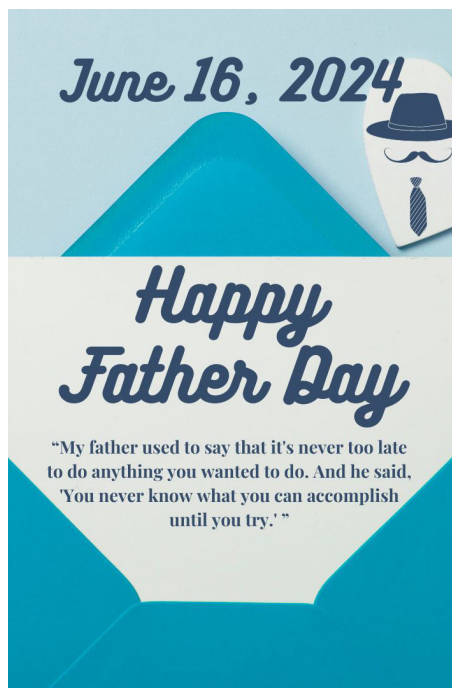
program. If you choose, you can always pay extra during warmer months so that you build up a cash cushion to use during the colder months. To ensure your payment is on time each month, we encourage you to consider enrolling in autopay.

True-up occurs every year during the anniversary month of your initial budget billing enrollment. This means whether you have a credit or a balance due; we will adjust your electric billing account accordingly.

We encourage members enrolled in budget billing to monitor their monthly usage and look at the current charges. Compare last year's usage to the same

month's usage in the current year. If there is a significant difference, is there an explanation? If you cannot determine why there is a change in your usage, call the office at 406-654-2040 and we can look at your daily usage history to help identify when your meter began showing more usage. This often helps members determine the cause, i.e., a worn-out refrigerator or a heater left turned on, or perhaps family members have been home more recently.

If you are interested enrolling in the budget billing program, call (406) 654-2040 to sign up. RM



How can SmartHub help you control your account?

Our SmartHub web portal or mobile app will keep you informed and show you where to save time and money on your bills.

Billing & Payments: No more waiting for your bill to arrive in the mail, access your bill at anytime from anywhere. Save time with easy payment options to avoid late fees and service interruptions.

Alerts & Notifications: It can be frustrating waiting on hold to get your questions answered or pay your bill. Stay informed on important account events via email or text messages. Receive the information you need to make the right decisions about your account.

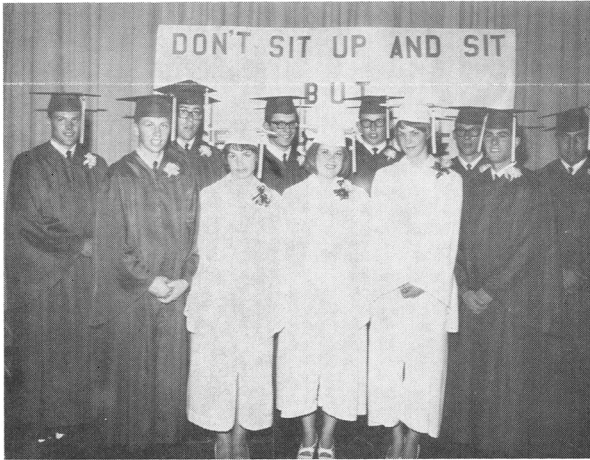
Paperless Billing: What if you could save some time and a tree at the same time? Activate SmartHub paperless billing, an eco-friendly way to instantly access your bill.

Usage Monitoring: Worrying about usage or surprising bill amounts can be stressful. When you know what devices are using the most [energy/bandwidth], you can make money-saving decisions about your account. Imagine opening your bill and seeing an amount less than expected.

SmartHub gives you complete control over your account by giving you the tools that deliver the right information at the right time so you can make the right decisions about your account.

FROM JUNE 1966: *BFEC NEWSLETTER*

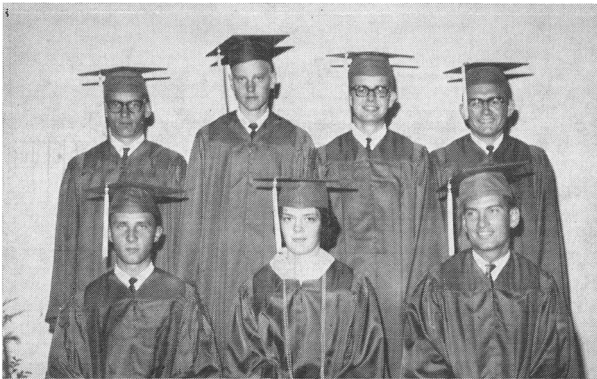
Big Flat Electric Cooperative Congratulates '66 Graduates



TURNER HIGH SCHOOL GRADUATING CLASS OF 1966 — Back row—Darrell Wolery, Tom Gill, Russell Ritter, Perry Simons, Francis VanVoast and K. R. Warren. Front row—Russell Getten, Nancy Mohar, Phyllis Hutton, Julie Simons, Wellen Jones, Jr.



HOGELAND HIGH SCHOOL GRADUATING CLASS OF 1966 — Back row—David Rucinsky, Rick Hedstrom and Dennis Rucinsky. Front row—James Billmeyer, Lorretta Zellmer, Margaret Rucinsky and Randy Johnson.



WHITEWATER HIGH SCHOOL GRADUATING CLASS OF 1966 — Back row—Larry Schwarz, Bruce Hoover, Berton Brown, Larry Ochsner. Front row—Eddie Anderson, Linda Wasson and J. L. Ivanovitch.

Along Our Lines

Thomas Taylor has moved a large trailer home to his farm south of Malta.

The basement has been laid and work has started on the new home for Mr. and Mrs. Dean VanVoast near Turner.

Stan Boothe has purchased the Clyde Morris farm north of Dodson. Mr. and Mrs. Morris have moved to Malta to make their home.

Louie Petrie is remodeling and installing electric heat in one of his residences near Turner, where his daughter and family will reside.

Arnold Englund is helping with the farming at the Clarence Englund farm near Saco this summer. His family will join him soon.

The Big Flat Electric now has 230 security lights installed on its lines. Lights have recently been installed for the Turner school, No. 2; Louie Petrie, Turner; and Carl Stahl, Saco.

BOARD OF DIRECTORS

- District 1 Duane Klindworth
- District 2 Alan Van Voast
- District 3 Alan Wasson, President
- District 4 Betty Campbell, Sec. /Treas.
- District 5 Roger Solberg, Vice President
- District 6 Patty Quisno
- District 7 Kevin Koss

General Manager: Gretchen Boardman



BIG FLAT ELECTRIC COOPERATIVE

SERVING BLAINE, PHILLIPS AND VALLEY COUNTIES

P.O. BOX 229 • MALTA, MT 59538 • WWW.BIGFLATELECTRIC.COM

A Touchstone Energy™ Partner 
The power of human connections

CONNECT WITH US
OPEN WEEKDAYS 8 A.M. TO 5 P.M.

333 S 7TH ST E
MALTA, MT 59538
(406) 654-2040

**AFTER HOURS
OUTAGE:**
(406) 654-7400

PAYMENT OPTIONS:
1-833-368-2470 or
bigflatelectric.com