



# BIG FLAT NEWS



October 2024

[www.bigflatelectric.com](http://www.bigflatelectric.com)



## Big Flat Electric director and GM meet Director of Indian Affairs Kuhl

**DIRECTOR** Patty Quisno and General Manager Gretchen Boardman, among other cooperative leaders, had the opportunity to listen to guest speaker Misty Kuhl, Director of Indian Affairs for the state of Montana in Lewistown recently. Ms. Kuhl is an A'aniih member of the Fort Belknap Indian Community. Ms. Kuhl spoke on many things, including having strong positive relationships with tribes. We are fortunate to have a great relationship with our Fort Belknap Tribe. RM

## Incumbent Duane Klindworth nominated for director for District 1 - Hogeland Area



**DUANE KLINDWORTH**

**21 YEARS**

DISTRICT 1 • Hogeland Area

**O**N September 5, 2024, members of Big Flat Electric Cooperative met to nominate director candidates for District 1 (Hogeland Area). Incumbent director Duane Klindworth was nominated by the nominating committee for District 1. Being nominated by the nominating committee is one of two ways names may be printed on the ballot at the Annual Meeting. If any other members in District 1 would like to run for director, the member may turn in a petition, signed by at least 15 members, to the cooperative office not less than 15 days before the Annual Meeting.

The director elections will be held at the October 12th Annual Meeting. We thank these members for taking the time to represent their district on the Nominating Committee! The committee members were Dalton Cornell, Shane Jones and Lorin Krass. RM

# CAPITAL CREDIT CHECKS Invalid addresses

**T**HE Big Flat Electric Cooperative Board of Directors approved a capital credit retirement for the year 2007 totaling nearly \$115,000. Checks will be available at the Annual Meeting on October 12 at the Malta High School. Checks not picked up there will be mailed at a later date. Below is a list of former members set to receive a check that we don't have a valid address for.

If you have a current address for anyone listed, please call the office at 406-654-2040 or email Kari at [kari@bigflatelectric.com](mailto:kari@bigflatelectric.com). Thank you!

BELL, GEORGE (ESTATE)  
BUTLER, LORA A  
MCGUIRE, MARY  
BELL, TERRANCE (ESTATE)  
DUBOIS, LELAND (ESTATE)  
NELSON, JAMES  
BLACKCROW, KENNETH  
EREAX, JOHN

NORTON, HENRY (ESTATE)  
BOE, DEANNA (ESTATE)  
GUENTHER, WES  
REEVIS, KAREN  
BOE, SYLVIA  
MANLEY, JUSTINE  
SHUMATE, AARON

## ANNOUNCEMENT

# BIG FLAT ELECTRIC COOPERATIVE

# 77th ANNUAL MEETING

OCTOBER 12, 2024

MALTA HIGH SCHOOL AUDITORIUM

REGISTRATION: 9 a.m.

MEETING: 10 a.m.



## A DIVERSE FUEL MIX IS A SLAM DUNK FOR RELIABLE ELECTRICITY

Just like a basketball team depends on players with different skillsets, we depend on a variety of fuels to generate the electricity that powers life 24/7. Renewable energy sources like wind and solar are key players in our fuel portfolio, but the sun doesn't always shine and the wind doesn't always blow. A diverse team of fuels ensures we have electricity whenever we need it.

*Source: 2022 EIA national utility data  
Approximately 3% of electricity is generated from other sources.*





## ONE BIG FISH

Congratulations to Jim Fauth, former Big Flat Electric Cooperative lineman and meter tech, for catching the new state record salmon. The fish was caught on Ft. Peck Lake, it weighed 32.62 lbs. and was 38 inches long.

## PHOTO SPOTLIGHT

Hermanson School. | PHOTO BY LEIF SORENSON



OCTOBER IS NATIONAL

C	O	P
M	O	N
T	H	

**Electric cooperatives are not-for-profit, community-led utilities. Because we are a co-op, we can adapt to our local members' needs, providing the programs and services you care about most. *That's the power of co-op membership.***

## FROM OCTOBER 1964: *BFEC NEWSLETTER*

### Annual Meeting of the Members



Gus Norwood, Executive Secretary of the Northwest Public Power Association told the Members of the Big Flat Electric that the Pacific Northwest is entering a golden age of hydroelectric dams and long distance transmission.



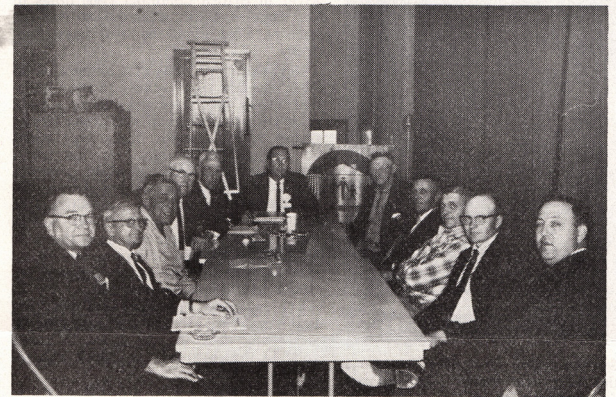
A lunch of roast beef, baked potatoes with all the trimmings was served by the Loring Women's Club at the annual meeting.



Manager Lonnie Lilliams presenting Mrs. B. M. Phillips with a door prize.



Magician Bill Haney from Great Falls entertains the members.



The new board of directors organized following the annual meeting at the City Hall. Gus Norwood, principal speaker, and Willis McKeon at each end facing camera.

### BOARD OF DIRECTORS

- District 1 Duane Klindworth
- District 2 Alan Van Voast
- District 3 Alan Wasson, President
- District 4 Betty Campbell, Sec. /Treas.
- District 5 Roger Solberg, Vice President
- District 6 Patty Quisno
- District 7 Kevin Koss

General Manager: Gretchen Boardman



## BIG FLAT ELECTRIC COOPERATIVE

SERVING BLAINE, PHILLIPS AND VALLEY COUNTIES

P.O. BOX 229 • MALTA, MT 59538 • WWW.BIGFLATELECTRIC.COM

A Touchstone Energy™ Partner   
The power of human connections

**CONNECT WITH US**  
**OPEN WEEKDAYS 8 A.M. TO 5 P.M.**

333 S 7TH ST E  
MALTA, MT 59538  
(406) 654-2040

**AFTER HOURS  
OUTAGE:**  
(406) 654-7400

**PAYMENT OPTIONS:**  
1-844-968-1965 or  
[bigflatelectric.com](http://bigflatelectric.com)