

BIG FLAT NEWS



July 2025

www.bigflatelectric.com

■ POLICY MATTERS

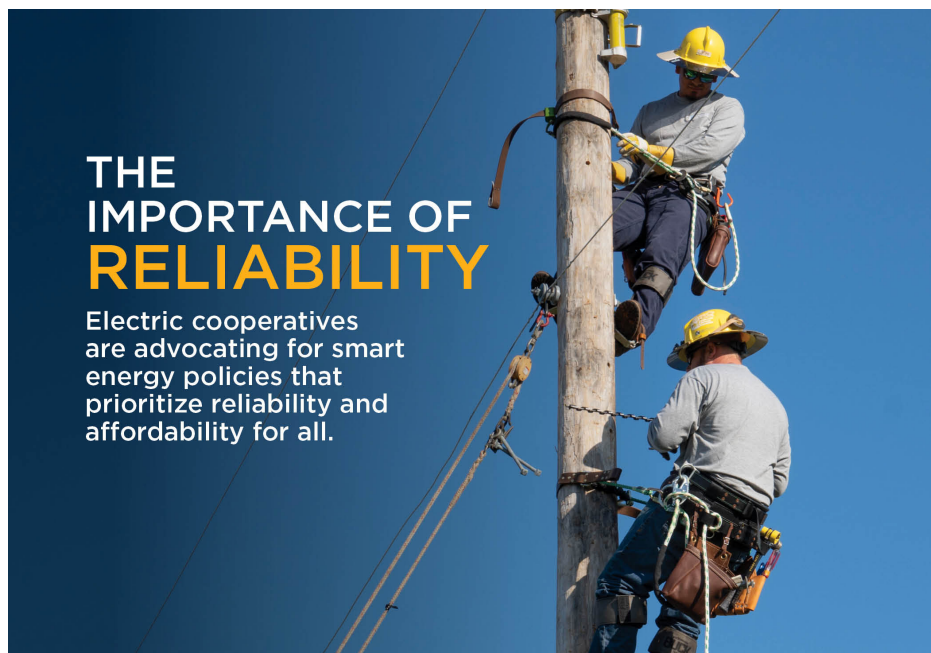
Recent review of EPA rules signal reliability wins

By **MOLLY CHRISTIAN** | NRECA

ELECTRIC cooperatives are applauding a recent series of actions announced by the Environmental Protection Agency (EPA). These actions would alleviate reliability and cost challenges for electric co-ops across the U.S.

The EPA said it will review and reconsider the Biden Administration's power plant greenhouse gas rule. The agency also plans to reconsider other rules hindering America's energy dominance, including the mercury and air rule, ozone transport rule and power plant wastewater rule. The agency will also address a number of fundamental problems with the coal ash program and take other actions to unleash American energy while protecting the environment.

The National Rural Electric Cooperative Association (NRECA), the national trade association that represents electric cooperatives in D.C., flagged concerns with these rules in a letter to EPA Administrator Lee Zeldin in January. NRECA CEO Jim Matheson met with Zeldin at EPA's headquarters to discuss these issues. The letter served as a policy roadmap recommending



ways the EPA could address harmful regulations for electric co-ops while ensuring reliable and affordable power, and promoting a healthy environment.

The recent EPA announcements are another critical step that puts our nation on a path towards a more reliable and resilient electric grid — and not a moment too soon. The demand for electricity is skyrocketing, yet

unrealistic public-policy decisions are forcing always-available generation resources to retire faster than they can be reliably replaced.

Electric cooperatives appreciate the EPA's recent actions that could bolster American energy dominance with sound policies that protect our environment — without leaving American families in the dark. RM

Welcome to Big Flat



Cole Sloan



Hunter Goodman

Two linemen join the team

BIG Flat Electric would like to welcome two new employees to our linemen crew. Hunter Goodman is from Columbia Falls and Cole Slone is from Three Forks. Both are recent graduates of Highland College - Montana Tech in Butte. RM

AROUND BIG FLAT ELECTRIC



ABOVE: BFEC linemen unloading a 225 KVa 3-phase pad transformer.

**BIG FLAT ELECTRIC WILL BE CLOSED
JULY 4TH.**



**Willy Wirehand says,
“Remember not to take your
freedom for granted”.**

SAVE THE DATE

**BIG FLAT ELECTRIC
COOPERATIVE**

**ANNUAL MEETING
OCTOBER 11, 2025**

**MALTA HIGH SCHOOL
AUDITORIUM**

**REGISTRATION - 9 A.M.
MEETING - 10 A.M.**



Tips to keep cool and save energy during the summer

As we soak up the additional sunshine, it's the perfect time to consider ways to keep cool while saving energy:

- Use ceiling fans to circulate air so you can raise the thermostat a few degrees without sacrificing comfort.
- Use curtains to block out direct sunlight and keep your home cooler.
- Set your thermostat to 78 degrees F – the sweet spot for energy savings when you are home.
- If you haven't already, switch to LED bulbs, which use less energy and give off less heat.

Enjoy the summer season while keeping your energy bills in check! 

JOIN US FOR COOPERATIVE POOL DAY

COURTESY OF BIG FLAT ELECTRIC & TRIANGLE COMMUNICATIONS

FREE
SWIMMING AND TREATS!!

HARLEM POOL - JULY 14TH
MALTA POOL - JULY 21ST

THINGS TO REMEMBER:

- **Find us on Facebook** under Big Flat Electric Cooperative, Inc.
- **Visit our website** at www.bigflatelectric.com.
- **Sign up for budget billing** and/or ACH (auto payments) by calling our office.
- **Bills** are generated on the 1st working day of each month, and are due on the 20th of each month.
- **Bills that are 60 days in arrears are subject to disconnect.** Once disconnected, a reconnect fee will be charged. The bill will then have to be paid in full to be reconnected.
- **We have a secure, automated toll-free phone number** for members making payments by credit card and/or bank account: 1-844-968-1965. You will need to have your account number and/or phone number that is on file with our office to access the automated system.
- **Take control of your electric account with SmartHub.** You can pay your bills; set up and cancel reoccurring payments; set up notifications; obtain duplicates of your bills; and view your monthly and yearly usage, all at your fingertips. Visit our website: www.bigflatelectric.com or download the SmartHub app from your Play Store on Android or the App Store on Apple devices.
- New service and service change quotes are only **valid for 30 days**.

QUOTE OF THE MONTH

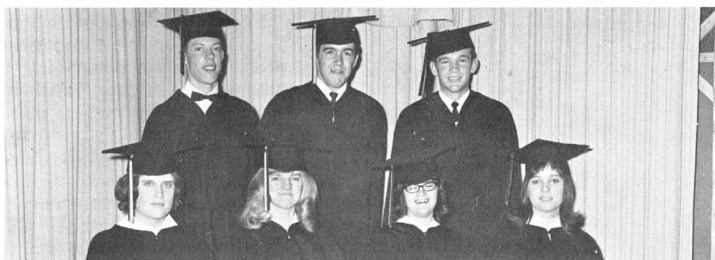
"Remember that the airplane takes off against the wind, not with it."

HENRY FORD

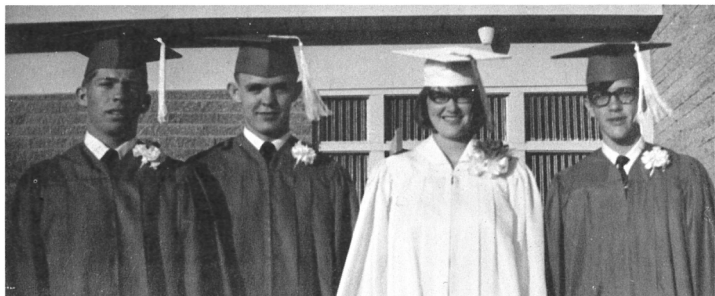
FROM JULY 1967: BFEC NEWSLETTER



WHITEWATER HIGH SCHOOL GRADUATION CLASS OF 1967 . . . From left to right: George Anderson, Robert Silva, Pat Dunbar, Susan Allery, Robin McMullen, Dixie Cowan, Leroy Simonson and Robert Ochsner.



HOGELAND HIGH SCHOOL GRADUATION CLASS OF 1967 . . . From left to right, back row: Marvin Holloway, Don Phipps and John Wing. From left to right, front row: Sandra Laco, Aileen Humphreys, Mary Ellen Anderson and Frances Rucinsky.



TURNER HIGH SCHOOL GRADUATION CLASS OF 1967 . . . From left to right: Gary Martin, Ryle Simons, Pegie Petrie and David Hauge.

The Cool Facts, Ma'am!

Although we do not generally have a long season of hot weather in our area, it is really hot for a few weeks in July and August. The comfort that a window type air conditioner provides during these hot weeks is well worth the very low promotional price that we can offer for a limited time on a given number of units.

The board of trustees authorized the Big Flat to purchase a few air conditioners and sell them at a special price to our consumers.

A 18,000 BTU/hour rating unit, 230 volts, NEMA certified. Special price to Big Flat Electric Consumers and delivered to your door.....\$210.00

A 24,000 BTU/hour rating unit, 230 volts, NEMA certified. Special price to Big Flat Electric Consumers and delivered to your door.....\$255.00

These units are complete with mounting kits for a QUICK, SIMPLE INSTALLATION.

It is easy to install quickly in windows as small as 28" and up to 48".

If you prefer, you can insert through the wall. Chassis is removable to let you install lightweight outer case, then slide chassis into position.

Call or write the Big Flat Electric Office and one will be delivered to you.

Congratulations To Graduates Of High Schools

Again it is time to offer our congratulations to the 1967 graduates of all the high schools being served by the Big Flat Electric Cooperative.

Each year, we have tried to devote an issue of the Big Flat news for special congratulations to our high school graduates from Hogeland, Turner and Whitewater. Twenty young people received their high school diploma from these three schools this year.

We of the Big Flat Electric, along with your parents, are proud of you and wish you success and the best of luck in whatever your future plans may be.

BOARD OF DIRECTORS

District 1	Duane Klindworth
District 2	Alan Van Voast
District 3	Alan Wasson, President
District 4	Betty Campbell, Sec. /Treas.
District 5	Roger Solberg, Vice President
District 6	Patty Quisno
District 7	Kevin Koss

General Manager: Gretchen Boardman



BIG FLAT ELECTRIC COOPERATIVE

SERVING BLAINE, PHILLIPS AND VALLEY COUNTIES

P.O. BOX 229 • MALTA, MT 59538 • WWW.BIGFLATELECTRIC.COM

A Touchstone Energy™ Partner
The power of human connections

CONNECT WITH US

OPEN WEEKDAYS 8 A.M. TO 5 P.M.

333 S 7TH ST E
MALTA, MT 59538
(406) 654-2040

AFTER HOURS
OUTAGE:
(406) 654-7400

PAYMENT OPTIONS:
1-844-968-1965 or
bigflatelectric.com